

TOFINO CORPORATE RETREATS

Bring your team together in a setting designed to spark connection and fresh thinking.



up to 60 guests



13 min from airport



3 hours from BC Ferry



1.800.565.2322



1421 Pacific Rim Hwy, Tofino



groups@pacificsands.com



pacificsands.com

BEACHSIDE PERKS

Want to book team-building or individual activities for your group? We're here to help with convenient, onsite add-on bookings, including:

- Surf equipment and lessons with Surf Sister Surf School at our onsite [Surf Shack](#).
- [Spa services](#) with our onsite By The Sea Massage & Bodywork spa.
- Private [beachfront sauna](#) sessions with our onsite Tuff City Saunas.
- [Bike rentals](#) from our onsite Tofino Bike Co.
- Private yoga classes for all levels expertly taught by Heidi MacPherson, who leads Pacific Sands' yoga program.



RETREAT PLANNING + VENDORS

For expert local Retreat Planning Services, we've partnered with Tofino-based [Brite Collective](#). From team-building sessions to signature Tofino adventures, Brite Collective is here to help customize and coordinate every detail of your retreat, ensuring a seamless and memorable experience.

Some highly recommended, chef-run Tofino catering companies to consider for your group catering needs:

- [Taste of Tofino](#)
- [Heartwood Kitchen](#)
- [Neck of the Woods](#)

Pacific Sands Beach Resort has two onsite food venues offering classic beach food and convenient, grab-and-go snacks and specialty coffees:

- [Surfside Grill](#)
- [Beach Shack Cafe](#)





SIGNATURE GATHERING SPACES



SUNSET HOUSE

Sleeps up to 6

Entertaining

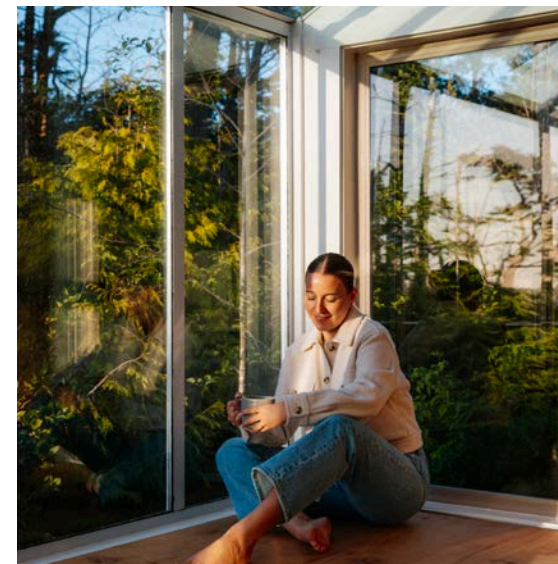
25 people

Meeting Setup

14-20 ppl

- For entertaining up to 25ppl cocktail style or 14ppl max for seated dinner.
- For meeting configurations, Sunset House can accommodate up to 14 attendees boardroom style. With additional table rentals or informal living room seating options, Sunset House can accommodate up to 20 attendees.
- Sunset House can sleep up to 8ppl shared. Any style of accommodation can be booked in addition to fill your group size needs.

[SEE FLOORPLAN + MORE PHOTOS](#)





PACIFIC SUITE

Sleeps up to 6

Cocktail Style

18 people

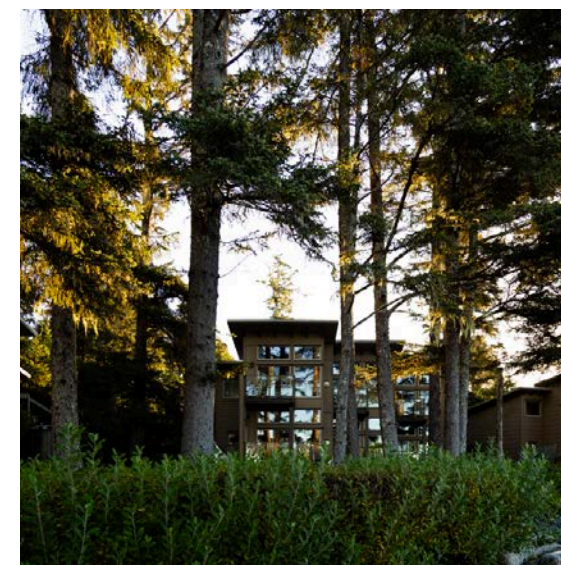
Boardroom Style

12 people

*adjacent units must be booked in conjunction

- For entertaining up to 18ppl cocktail style or 12ppl max for seated dinner.
- For meeting configurations, Pacific Suite can accommodate up to 12 attendees boardroom style. With additional table rentals or informal living room seating options, Pacific Suite can accommodate up to 18 attendees.
- [Pacific Suite](#) can sleep up to 4ppl and 2 surrounding Beach Houses (Units 35, and 37) are required to be booked in addition and can sleep up to 6ppl in each.

[SEE FLOORPLAN + MORE PHOTOS](#)





SAND DOLLAR SUITE

Sleeps up to 6

Cocktail Style

15 people

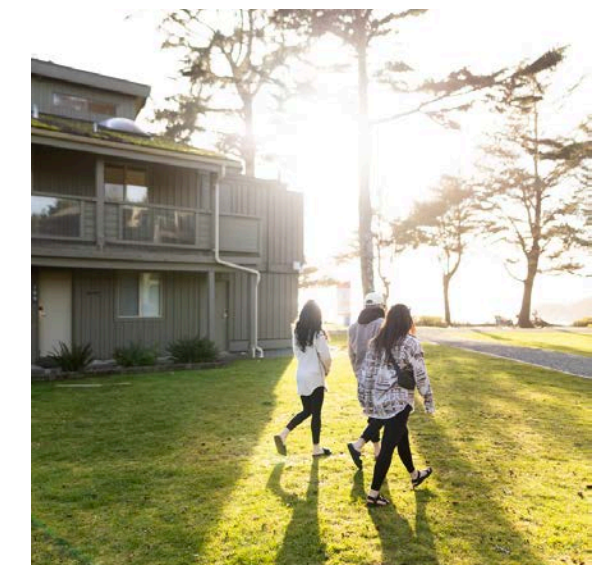
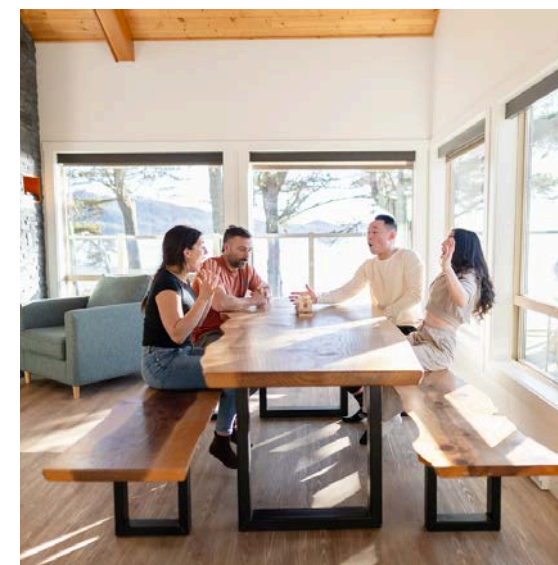
Boardroom Style

10 people

*adjacent units must be booked in conjunction

- For entertaining up to 15ppl for cocktail style or 10ppl for seated dinner.
- For meeting configurations, Sand Dollar Suites can accommodate up to 10 attendees boardroom style. With additional table rentals or informal living room seating options, Sand Dollar can accommodate up to 15 attendees.
- Sand Dollar Suite can sleep up to 6ppl and 3 Beach Front Suites below (units 168, 169, 267) are required to be booked in addition and can sleep up to 4ppl in each.

[SEE FLOORPLAN + MORE PHOTOS](#)





EDGEWATER SUITE

Sleeps up to 6

Cocktail Style

Boardroom Style

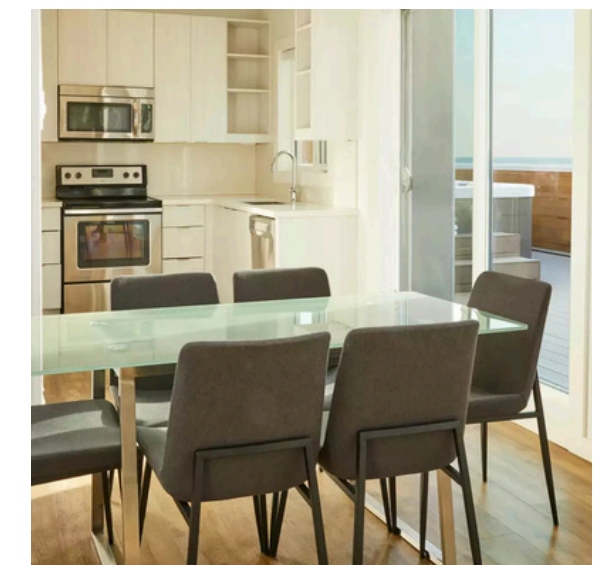
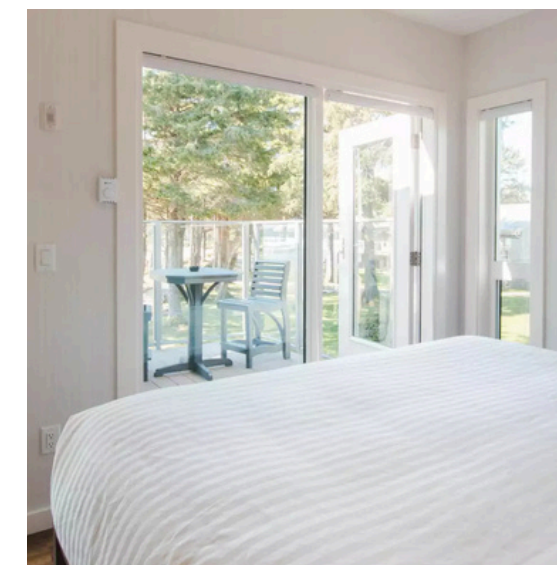
12 people

6 people

*adjacent units must be booked in conjunction

- For entertaining up to 12 ppl cocktail style or 6ppl max for seated dinner.
- For meeting configurations, Edgewater Suite can accommodate up to 6 attendees boardroom style. With additional table rentals or informal living room seating options, Edgewater Suite can accommodate up to 12 attendees.
- [Edgewater Suite](#) can sleep up to 6ppl and 3 surrounding One Bedroom Oceanside Suites (Units 313, 214, and 215) are required to be booked in addition and can sleep up to 4ppl in each.

[SEE FLOORPLAN + MORE PHOTOS](#)





RAINFOREST TENT

Seasonal outdoor space

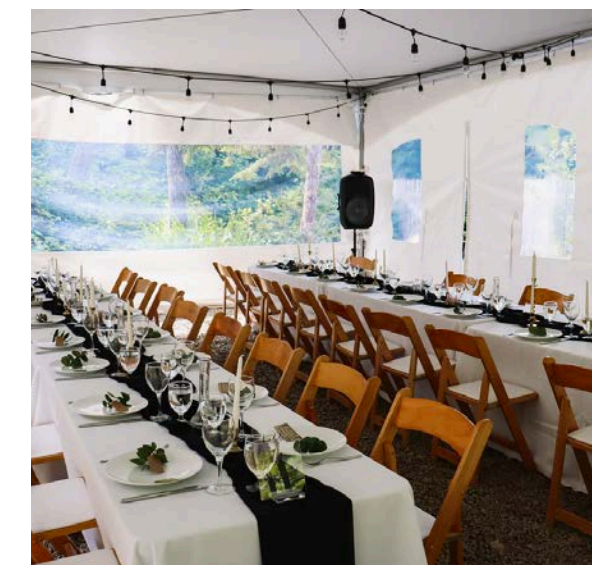
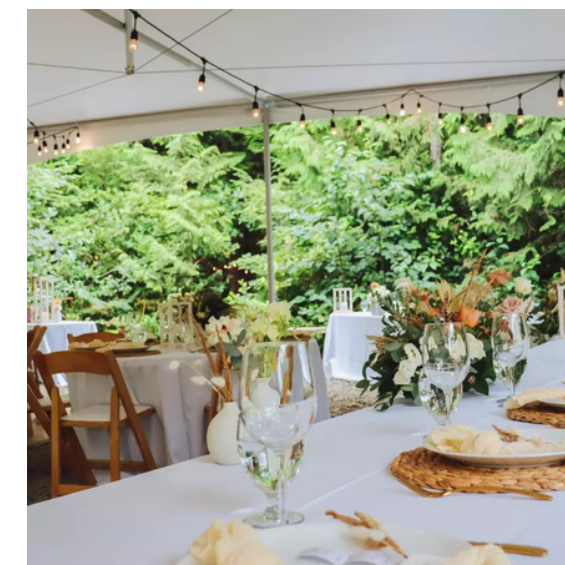
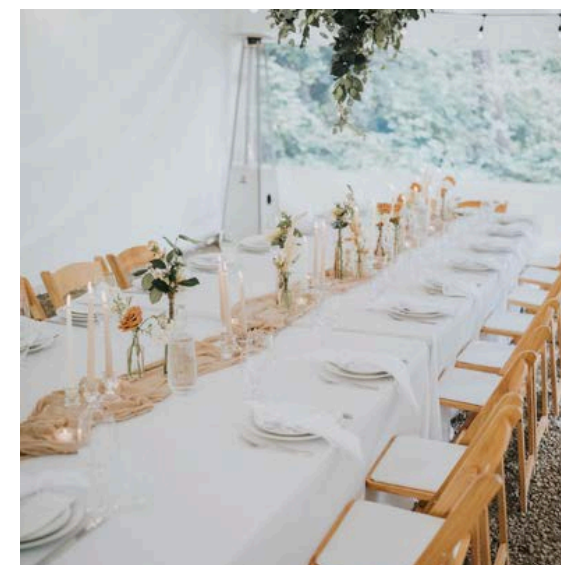
Cocktail Style

Boardroom Style

60 people

40 people

- For seasonal entertaining up to 60 ppl cocktail style or 40 ppl max for seated dinner.
- For meeting configurations, the outdoor heated Rainforest Tent can accommodate up to 40 attendees boardroom style with cedar picnic tables.
- Additional table + chair styles are available for rent from [Smashing Glasses Event Rentals](#).
- Rainforest Tent is equipped with outdoor BBQ space and fire pit area.





BOOK YOUR CORPORATE GATHERING TODAY

Enquire at groups@pacificsands.com